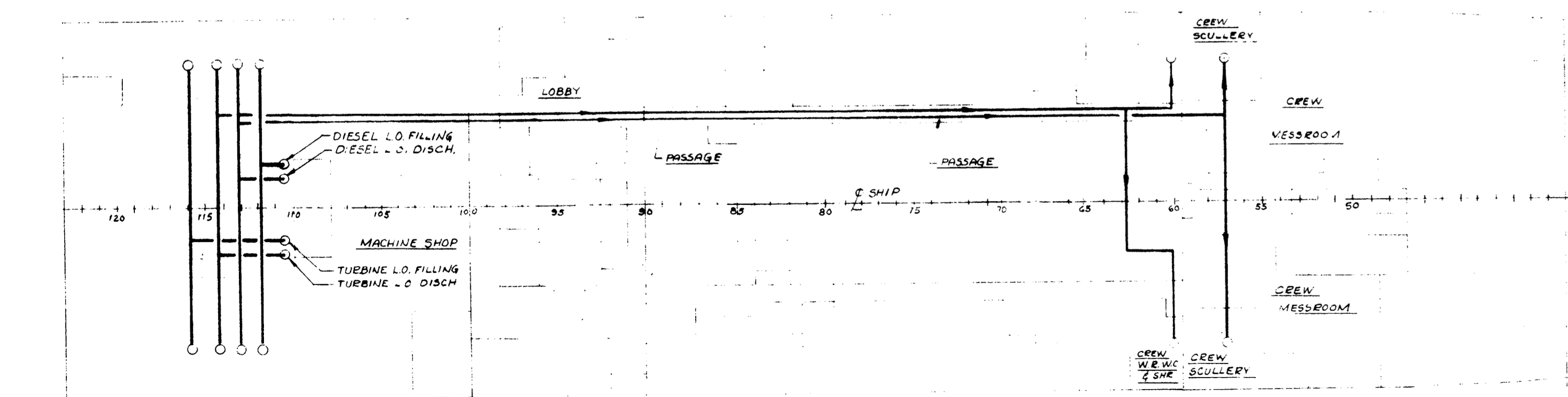
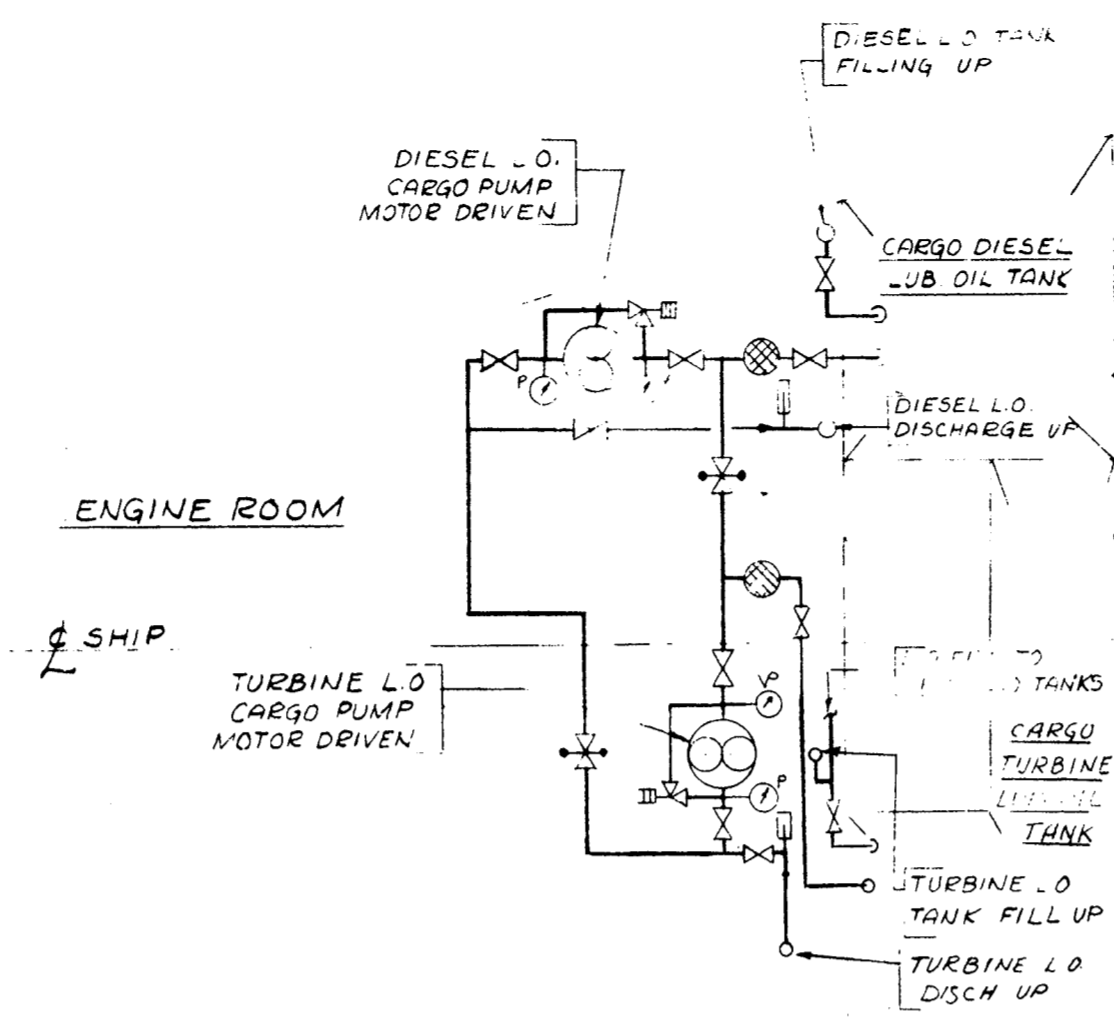


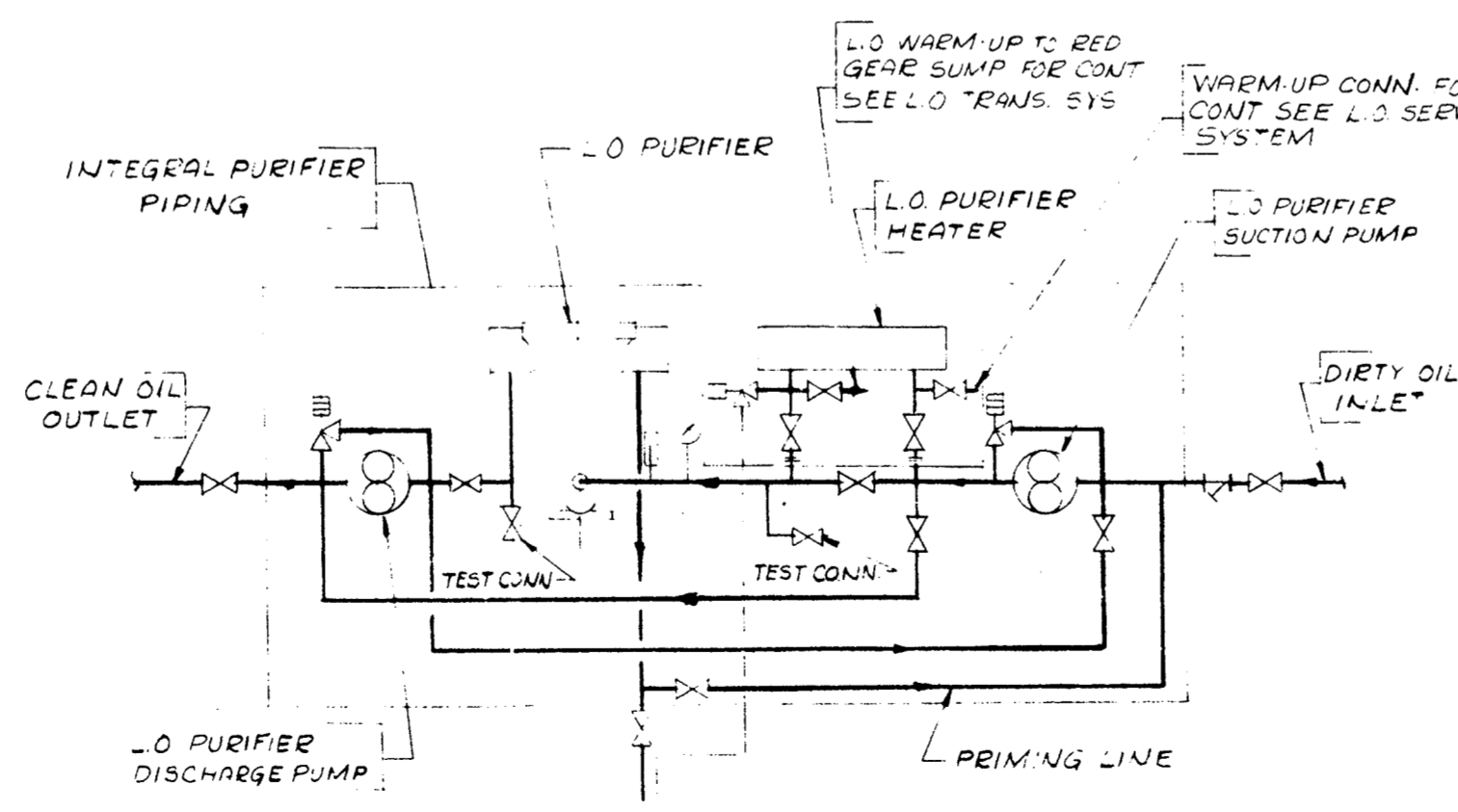
DIESEL & TURBINE L.O. FILLING & DISCHARGE - MAIN DECK



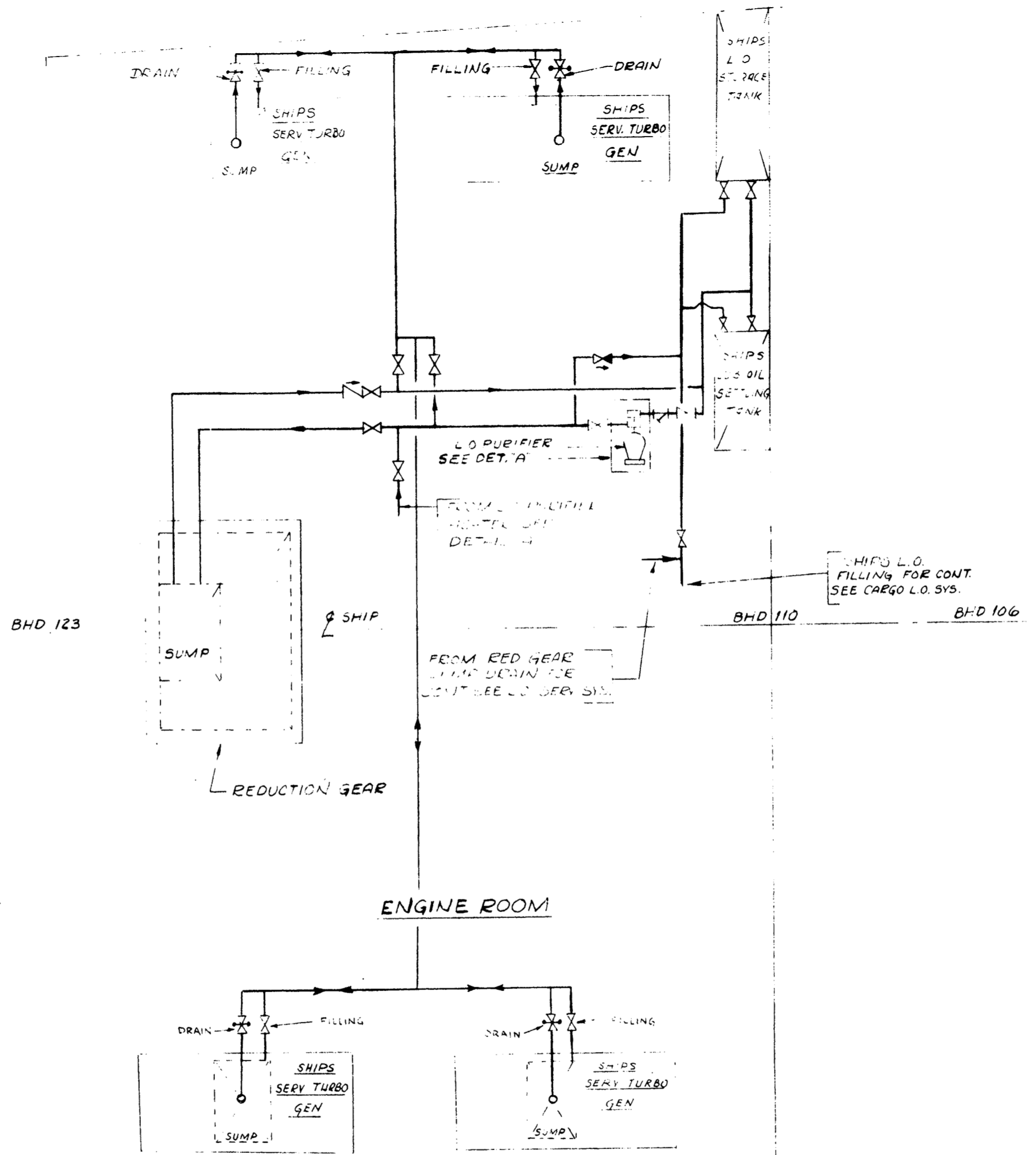
DIESEL & TURBINE L.O. FILLING & DISCHARGE - 2ND DECK



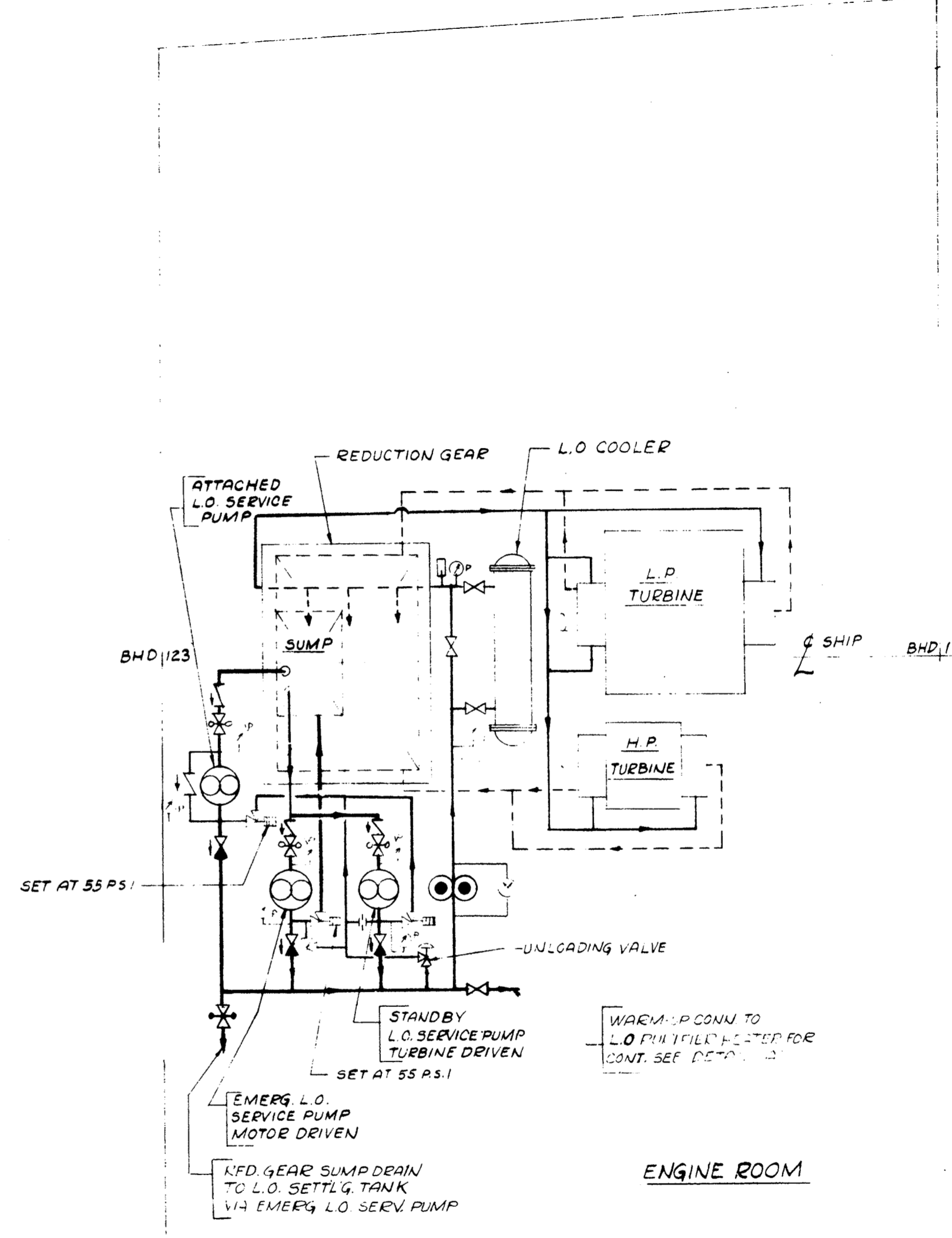
CARGO L.O. SYSTEMS



DETAIL 'A'  
PIPING ARRGT. AT L.O. PURIFIER



LUB. OIL FILLING, TRANSFER & PURIFICATION SYSTEMS



LUB. OIL SERVICE SYSTEM

~ SYMBOL LIST ~ (SEE NOTES #1 & #2)

|  |                               |
|--|-------------------------------|
|  | GLOBE STOP CHECK VALVE        |
|  | SWING CHECK VALVE             |
|  | RELIEF VALVE                  |
|  | UNLOADING VALVE               |
|  | GATE VALVE (LOCKED CLOSED)    |
|  | THERMOMETER BIMETALLIC        |
|  | PRESSURE GAGE                 |
|  | DUPLEX PRESSURE GAGE          |
|  | MAGNETIC STRAINER             |
|  | STRAINER                      |
|  | SULFIDE                       |
|  | VACUUM PRESSURE GAGE          |
|  | PIPE PASSING THROUGH DECK     |
|  | PIPE PASSING THROUGH OVERHEAD |
|  | GATE VALVE (LOCKED OPEN)      |
|  | GATE VALVE                    |
|  | HOSE VALVE (GATE TYPE)        |