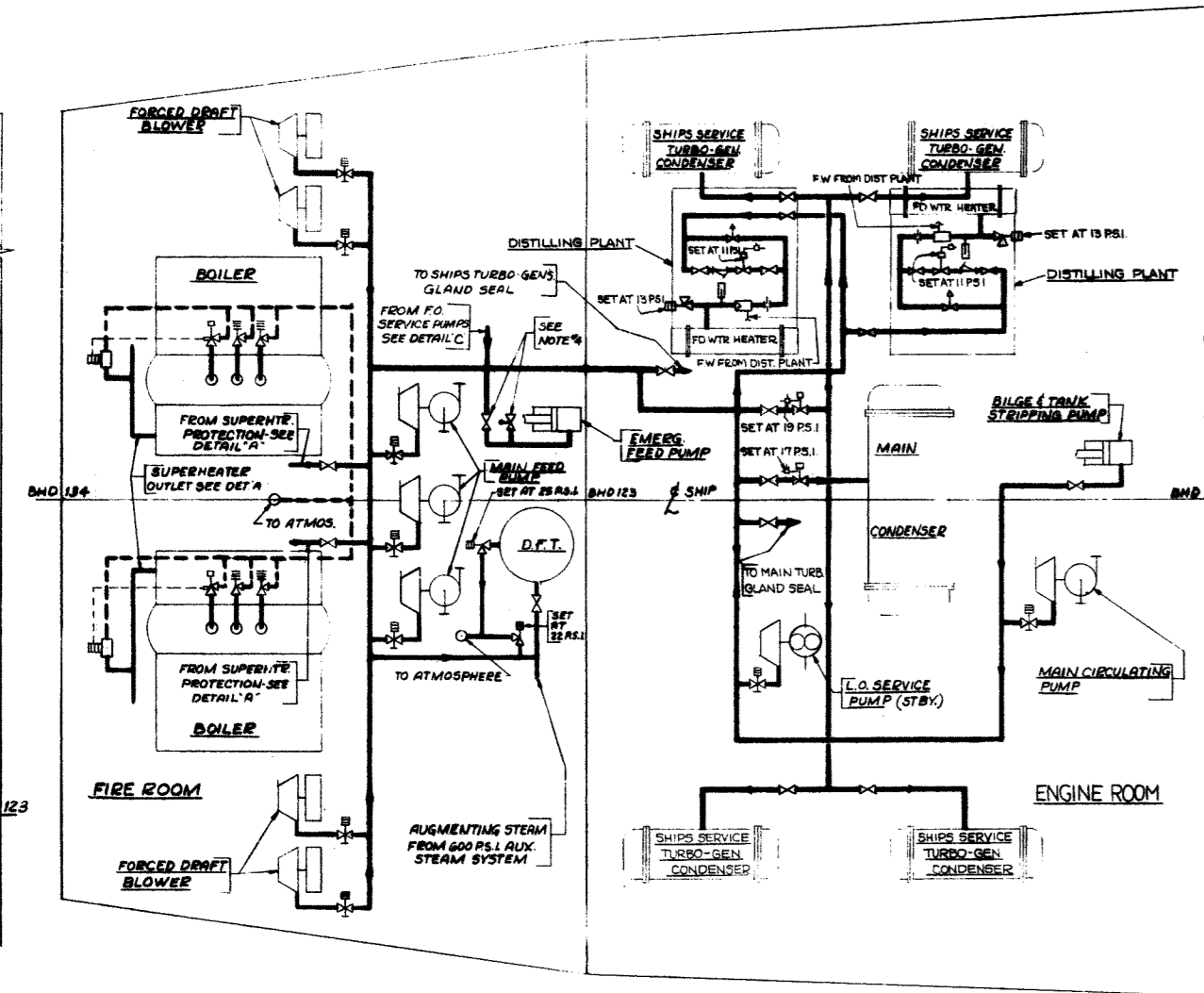
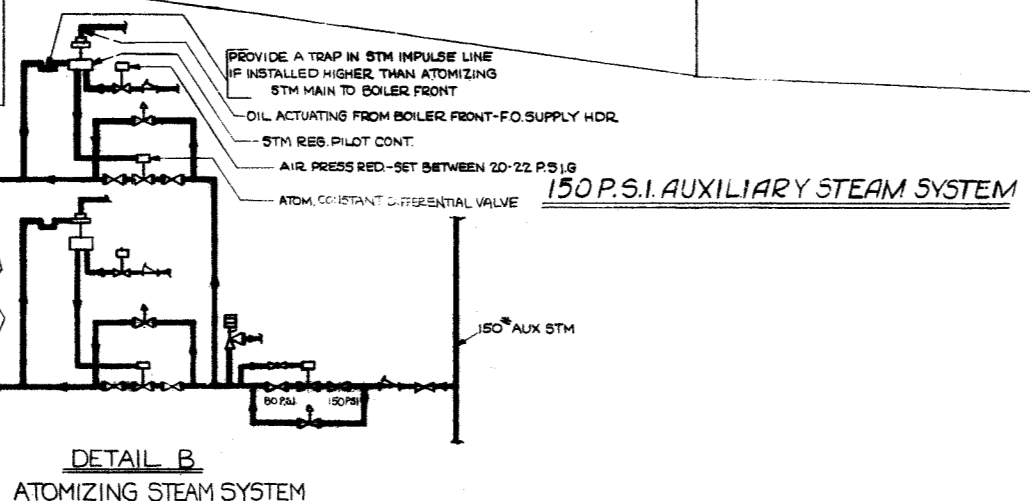


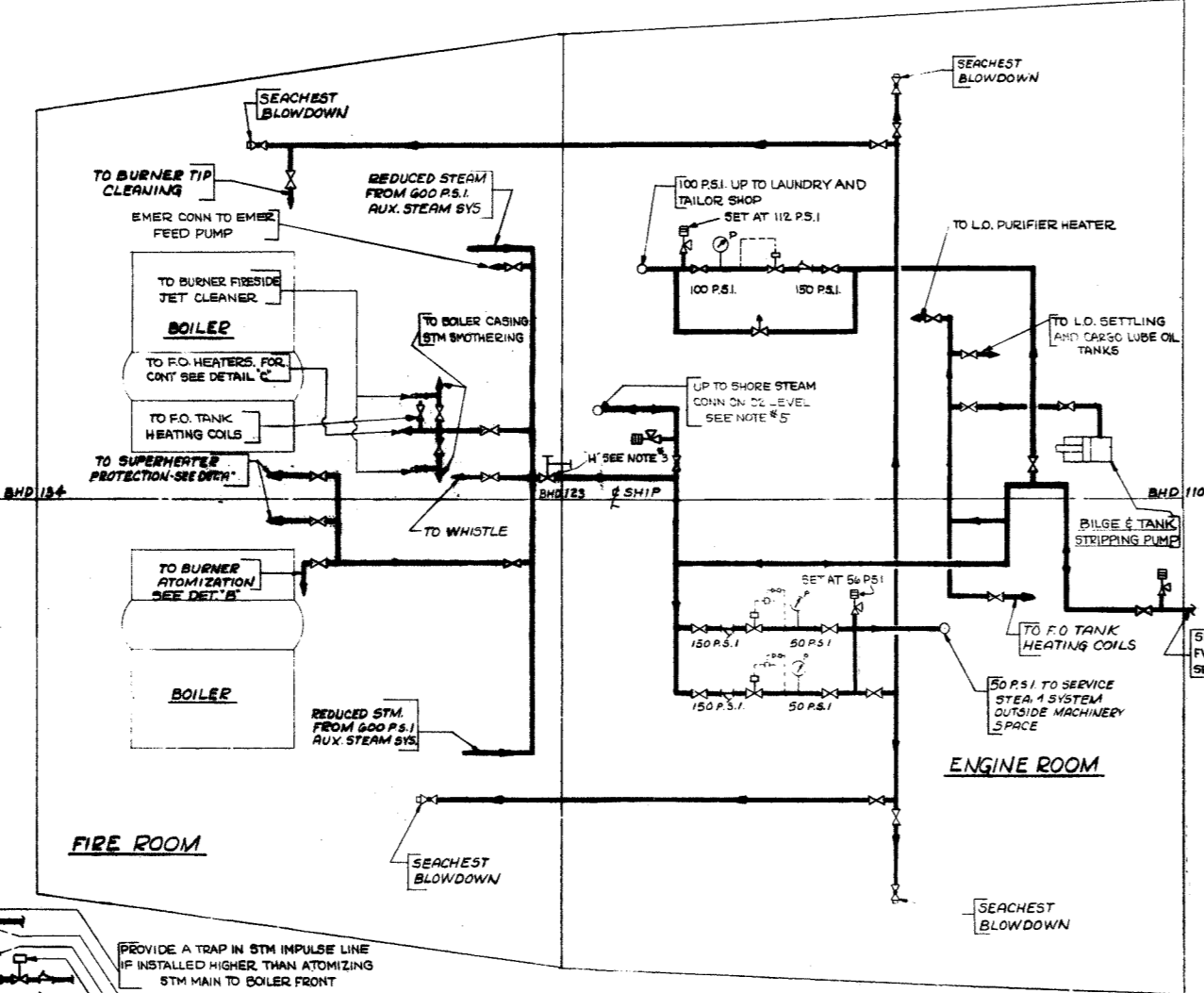
DETAIL C
FUEL OIL SERVICE AREA
(SEE NOTE #6)



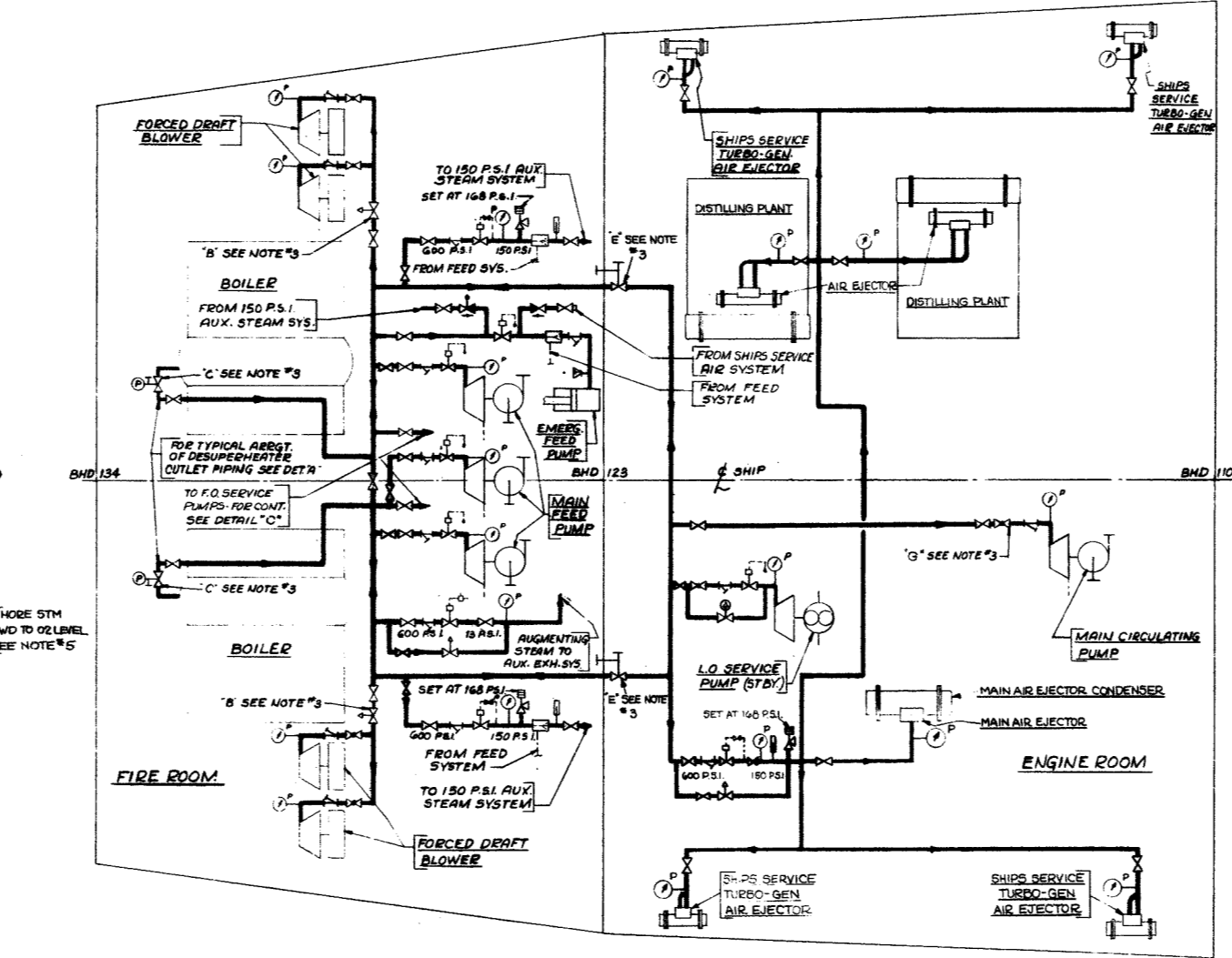
AUXILIARY EXHAUST & ESCAPE SYSTEMS



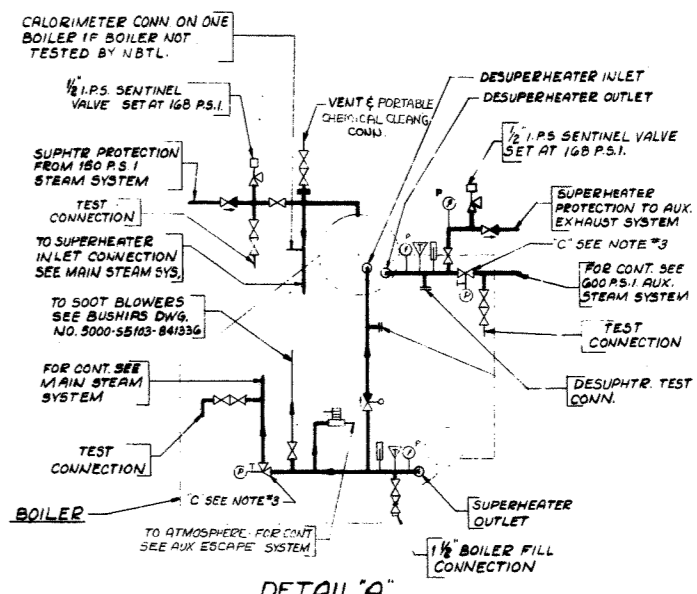
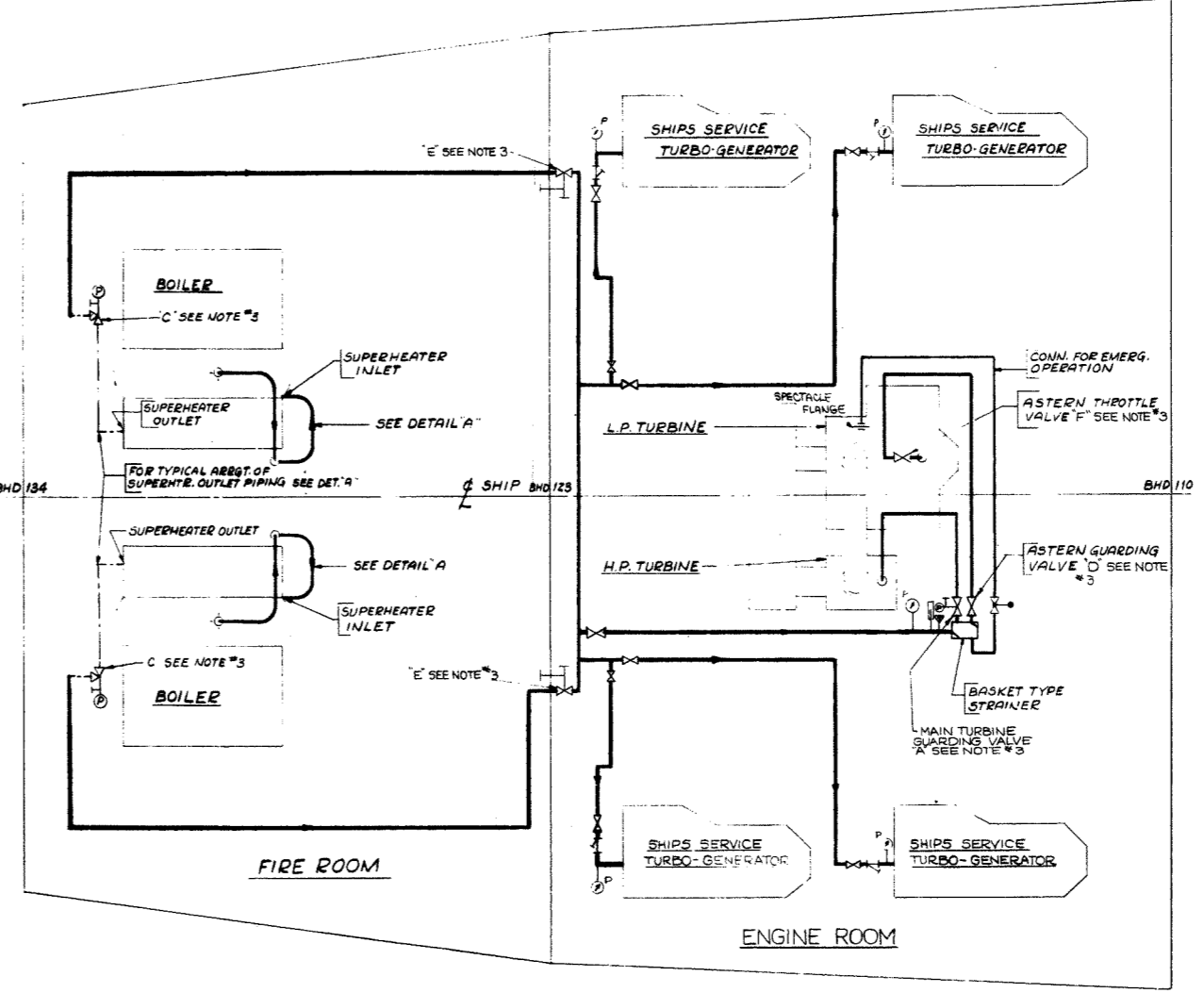
DETAIL B
ATOMIZING STEAM SYSTEM



600 P.S.I. AUXILIARY STEAM SYSTEM
WITH 150 P.S.I. STEAM TO AIR EJECTORS
(SEE NOTE #6)



MAIN STEAM SYSTEM
(SEE NOTE #6)



DETAIL A
TYPICAL ARRGT. OF STEAM PIPING AT REAR OF BOILER (SEE NOTE #7)

SYMBOL LIST (SEE NOTES #1 & #2)

* ---	HOSE VALVE (WOLF TYPE)
* ---	GATE VALVE
* ---	GLOBE VALVE
* ---	DESUPERHEATER
* ---	BOILER ESCAPE PIPING
---	STEAM PIPING
---	PIPE PASSING THROUGH OVERHEAD
---	GLOBE STOP CHECK VALVE
---	GLOBE STOP CHECK VALVE (LOCKED OPEN)
---	GLOBE STOP CHECK VALVE (LOCKED CLOSED)
---	NEEDLE VALVE
---	SAFETY VALVE SUPERHEATER PILOT ACTUATED
---	GLOBE VALVE (LOCKED CLOSED)
---	GATE VALVE (LOCKED OPEN)
---	PUMP GOVERNOR
---	PRESS. REDUCING VALVE INCREASED REGULATING PRESSURE VALVE
---	AIR PILOT OPERATED REDUCING VALVE INCREASED REGULATING PRESSURE VALVE
---	AIR PILOT OPERATED REGULATING VALVE INCREASED REGULATING PRESSURE VALVE
---	COMBINED EXHAUST-RELIEF VALVE
---	THERMOSTATICALLY CONTROLLED VALVE
---	SENTINEL VALVE
---	ANGLE STOP VALVE - AIR MOTOR OPERATED
---	GATE VALVE OPERATED AT PLACE (ADJACENT SPACE)
---	BOILER SAFETY VALVE
---	BOILER SAFETY VALVE WITH PILOT ACTUATOR
---	GATE VALVE - AIR MOTOR OPERATED
---	THERMOMETER - DISTANT READING
---	PRESSURE GAUGE
---	"Y" STRAINER
---	PIPE WITH BLANKED FLANGE
---	THERMOMETER - BI-METALLIC
---	RELIEF VALVE
---	NEEDLE VALVE (LOCKED OPEN SETTING)

- NOTES**
- SYMBOLS MARKED WITH * IN SYMBOL LIST ARE IN ACCORDANCE WITH MIL STD 17A OF 11 SEPTEMBER 1961.
 - SEE SECTION 8480-O-C OF DETAIL SPECIFICATIONS FOR PIPING END CONNECTIONS.
 - VALVE MARKED 'A' TO BE OPERATED MANUALLY LOCALLY AND PNEUMATICALLY (FOR COBING ONLY) FROM TURBINE OPERATING STATION. VALVE MARKED 'B' TO BE OPERATED FROM BOILER OPERATING STATION (OPERATED FOR COBING ONLY) LOCALLY AND FROM THE 04P DECK. VALVE MARKED 'C' TO BE OPERATED MANUALLY FROM TURBINE OPERATING STATION (PROVISION TO BE MADE IN INSTALLATION OF CONTROLS THAT VALVE MAY BE OPERATED BY AUTHORIZED PERSONNEL ONLY.). VALVE MARKED 'D' TO BE MANUALLY OPERATED LOCALLY AND FROM FIRE ROOM SIDE OF BULKHEAD. VALVE MARKED 'E' TO BE MANUALLY OPERATED FROM TURBINE OPERATING STATION. VALVE MARKED 'F' TO BE OPERATED LOCALLY AND FROM TURBINE OPERATING STATION. VALVE MARKED 'G' TO BE OPERATED LOCALLY AND FROM ENGINE ROOM SIDE OF BULKHEAD.
 - THE AUXILIARY EXHAUST VALVE FOR EMERGENCY FEED PUMP SHALL BE SECURED IF THE LOCKED CLOSED GLOBE VALVE LOCATED ON BRANCH DOWN BETWEEN EXHAUST VALVE & PUMP SHALL BE OPENED WHEN SHIPS SERVICE AIR IS USED TO OPERATE PUMP.
 - SHORE STEAM CONNECTIONS SHALL BE LOCATED ON D2 LEVEL AT ABOUT 75' G AND 116' G ROOF AND 57' G IN THE VICINITY OF THE SERVICE STATIONS FOR SUBMARINES.
 - ALL PIPING WHICH CAN EXCEED A TEMPERATURE OF 450°F SHALL NOT BE LED THROUGH THE FUEL OIL SERVICE AREA LOCATED IN FIRE ROOM - LOWER LEVEL, PORT SIDE (SEE REF #7) UNLESS IT IS INSTALLED WITHIN 18" OF BOILER CASING EXCEPT PIPING WHICH MUST PENETRATE THE BOILER CASING.

REFERENCES

NO.	TITLE	BUSHIPS NO.
1	TYPICAL ARRGT. OF STEAM PIPING AT REAR OF BOILER	AS 34-800-201886
2	REG. OF MACHINERY PLAN VIEWS	AS 34-800-201885
3	PIPE ARRGT. OF TURBINE & EXHAUST SYSTEM	AS 34-800-201887

DEPARTMENT OF THE NAVY WASHINGTON, D. C.

BUREAU OF SHIPS

EXAMINED OFFICIAL SIGNATURE

SUBMARINE TENDER AS 34

DIAGRAMATIC ARRANGEMENT OF STEAM & EXHAUST SYSTEMS

APPROVED DATE 12/13/67

BUREAU OF SHIPS NO. 201886

MACHINERY CONTRACT GUIDANCE PLAN AS 34-800-201886

SCALE: NONE